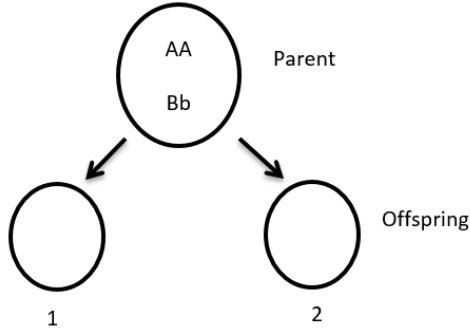


**Selected Response (SR) Sample Items Grades MS and HS**

1. A student is developing a model to show the reproduction of an organism being studied in class and two genes it carries.

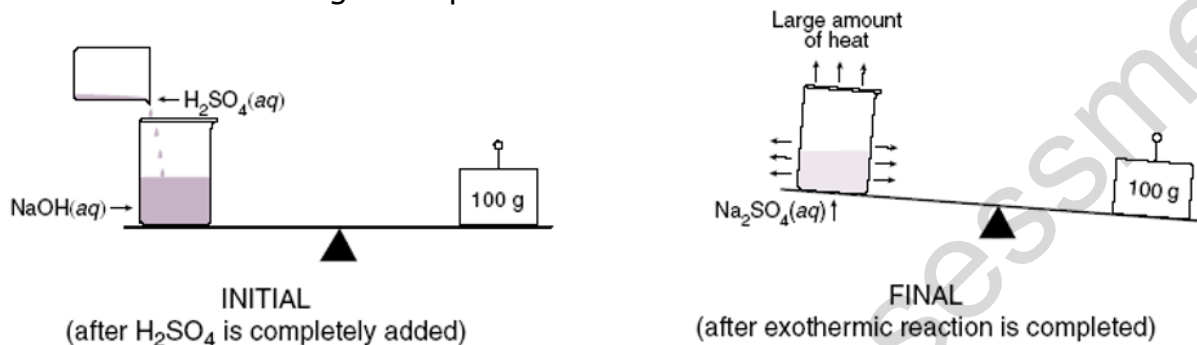


What type of reproduction is the student demonstrating in the model and what will be the gene combination in the offspring?

- A. Asexual reproduction; AB Offspring 1, Ab Offspring 2
- B. Asexual reproduction; AA Bb Offspring 1, AA Bb Offspring 2
- C. Sexual reproduction; Ab AB Offspring 1, AB Ab Offspring 2.
- D. Sexual reproduction; AA Bb Offspring 1, AA Bb Offspring 2.

**Selected Response (SR) Sample Items Grades MS and HS**

2. A student is conducting an experiment.



Why would the final weight of the beaker be less than the initial weight in this reaction?

- A. water weighs less than air
- B. some of the water molecules turned into gas
- C. sodium sulfate is a lighter product than the reactants
- D. heat coming off the beaker has mass, and so it is lost in the reaction